

# Kaymar

## Fitting Instructions



Vehicle Colorado RG  
Year  
Type Ute  
Part Rear Bar

### Applicable to Part Numbers

K3940, KITCOL, KITCOL-L-JCD, KITCOL-R-JCD

Date published December 6, 2016

## IMPORTANT - BEFORE COMMENCING INSTALLATION

Please verify the part number corresponds with the list above.

**Read through these instructions and check items in the supplied fitting kit matches the attached list.**

Every effort is made to ensure instructions are as accurate as possible at the time of publishing however work should not be commenced until the document has been thoroughly read, measurements checked and all components in the package verified as complete. Kaymar has used reasonable care in preparing the information included in these documents, but makes no representations or warranties as to the completeness or accuracy of the information. Information is supplied upon the condition that the persons receiving the information will make their own determination as to its suitability for their purposes prior to use. Kaymar assumes no liability whatsoever for any damages incurred by you resulting from errors in or omissions from the information included herein. Kaymar reserves the right to make changes without further notice to any products to improve reliability, function or design.

## HOLDEN COLORADO RG

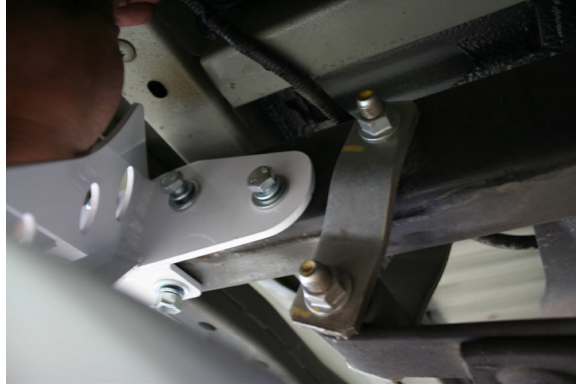
CHECK THAT THE TUB IS SQUARE ON THE CHASSIS

1. Remove bumper and towbar if fitted.
2. With another person, lift the Kaymar bar onto vehicle, being careful not to touch the tub.
3. Fit 8 x M12 x 1.25 x 35 bolt, spring and flat washer (4 x either side) to captive nuts inside chassis. **(DO NOT TIGHTEN)**



# Kaymar

## Fitting Instructions



4. From inside of chassis, fit 4 x bolt on wire (2 x either side), through the chassis and support gusset in bar. Secure using M12 flat, spring washer and nut. **TIGHTEN THESE BOLTS FIRST** and then remaining 8 in sides of chassis.
5. Splice wiring into trailer harness, using table below

Left hand Indicator	Yellow
Right hand Indicator	Green
Stop	Red
Tail	Brown
Reverse	Black
Earth	White
6. Fit chequer plate using thin bead of silicon along underside of chequer plate curved edge. Place rubber strip along edge. Place another thin bead of silicon on rubber strip. Fit to bar using stainless steel hex head screws and M6 flange nuts.
7. If carrier or jerry can holder to be fitted. See separate fitting sheet.

# Kaymar

## Fitting Instructions

### BK3940 RG COLORADO

QUANTITY	DESCRIPTION
8	BOLT M12 X 35 X 1.25 FINE THREAD
4	BOLT ON WIRE M12 X 30 X 1.75 150 MM WIRE
12	WASHER FLAT M12 X 30 HD
12	WASHER SPRING M12
4	NUT M12 X 1.75
10	WIRE CONNECTOR FEMALE
10	WIRE CONNECTOR MALE
1	WIRE TRAILER 7 CORE 1300 MM LENGTH



***bolt\_on\_wire\_M12x30x1.75\_150mm\_wire***